



Geography Medium Term Plan

Year	3 and 4	Term:	Spring 1	Unit:	Rock and Roll!
Big Question	Do volcanos still effect life today?				
Prior Substantive Knowledge	Human and Physical <ul style="list-style-type: none"> • Know the hottest and coldest seasons in the UK • Know the differences between city, town, and village • Know key physical and human features in hot and cold continents. 		Cross-curricular	DT, Science	
	Locational Knowledge <ul style="list-style-type: none"> • Name and locate the world's seven continents and five oceans. • Name and locate and identify characteristics of the four countries and their capital cities of the United Kingdom and their surrounding areas. • To locate and name the equator. 		Key Vocab	Volcano: An opening in the Earth's crust that allows molten rock, ash, and gases to escape. active volcano - A volcano with a recent history of eruptions that is likely to erupt again. tectonic plates - Large slabs that fit together to make up the Earth's crust. Mantle - The layer sandwiched between Earth's core and its thin outer crust. Dormant Volcano - A dormant volcano is one that has not erupted for a long time; however, it may still erupt in the future. Magma: Hot molten rock beneath the Earth's surface. Magma comes from the mantle.	
			Essential vocab	Lava: Magma that has reached the Earth's surface. Crater: The bowl-shaped depression at the top of a volcano. Eruption: The sudden discharge of molten rock, ash, and gases from a volcano. crust - The outer layer of the Earth. The crust is the solid rock layer upon which we live. volcanic eruption - When lava and gas shoot up through a volcanic vent. super volcano - A massive volcano that has huge explosive force. extinct volcano - A volcano that is not expected to erupt in the future.	
Substantive Knowledge (Know what)			Disciplinary Knowledge (Think like)		
Place Knowledge <ul style="list-style-type: none"> ▪ Know a region of a European country (Sicily Italy. Home to Mount Etna) Locational Knowledge <ul style="list-style-type: none"> ▪ Locate the world's countries using maps to focus on Europe including location of Russia and North/ South America Human and Physical Geography <ul style="list-style-type: none"> ▪ Know what causes volcanoes, earthquakes and tsunamis Geographical Skills and Fieldwork			Mapping <ul style="list-style-type: none"> ▪ Use index / contents pages of atlases ▪ Recognise contours show height and slope Enquiry and Investigation <ul style="list-style-type: none"> ▪ Make comparisons with own life and situations ▪ Show increasing empathy and describe similarities and differences Communication <ul style="list-style-type: none"> ▪ Reach geographical conclusions and begin to debate the impact of geographical processes and human effects on the world. 		



Geography Medium Term Plan

<ul style="list-style-type: none"> Use maps, atlases, globes to locate and describe Italy and other countries in Europe and their human and physical features, climate zones and major earthquake zone 	<ul style="list-style-type: none"> Ask and respond to geographical questions.
<p>Teacher Knowledge</p> <p>Volcano definition – An opening in the Earth’s crust that allows molten rock, ash, and gases to escape.</p> <p>Types of volcanos –</p> <p>super volcano - A massive volcano that has huge explosive force.</p> <p>active volcano - A volcano with a recent history of eruptions that is likely to erupt again.</p> <p>extinct volcano - A volcano that is not expected to erupt in the future</p> <p>Dormant Volcano - A dormant volcano is one that has not erupted for a long time; however, it may still erupt in the future.</p> <p>Earthquake definition – Huge masses of rock move beneath Earth’s surface and cause the ground to shake.</p> <p>Effects of volcanic eruptions (short term and long term) – Positive effects</p> <ul style="list-style-type: none"> Geothermal energy is where heat from within the Earth is used to generate electricity. Geothermal energy can be generated in areas where <i>magma</i> lies close to the surface. This is good for increasing renewable energy use. Ash ejected by the volcano acts as a good fertiliser for soils. Volcanoes attract many tourists, who enjoy the dramatic scenery that they produce. Rising magma brings valuable minerals to the surface, creating mining opportunities. <p>Negative effects</p> <ul style="list-style-type: none"> Volcanoes are dangerous. They can kill people and damage property. Economic activity can suffer as it is hard for businesses to operate after an eruption. Habitats and landscapes are damaged by <i>lava</i> flows. <p>Effects of earthquakes (short and long term) – The shaking of the ground caused by an earthquake can cause a variety of effects. These can be classed as primary or secondary effects. Primary effects are caused by the earthquake itself, whereas the secondary effects are caused by the primary effects.</p> <p>Primary effects</p> <ul style="list-style-type: none"> Buildings may collapse due to the shaking of the ground. People may die if they are inside a building when it collapses. Roads may be blocked, gas and water pipes could be broken and electricity could be cut off. The 2011 Tōhoku earthquake and tsunami in Japan caused widespread damage to the country, including the Fukushima Daiichi Nuclear Power Plant in Ōkuma 	<p>FRUITS</p> <p>Faith - Explore how different cultures and religion's view volcanoes and earthquakes. Some might see these natural phenomena as acts of divine power or as part of creation. Discuss how faith can provide strength and comfort to those affected by natural disasters.</p> <p>Relationships - Discuss how natural disasters can strengthen community relationships and cooperation. Highlight stories of people coming together to rebuild after disasters.</p> <p>Uniqueness - Emphasize the unique geological features of different regions. Each volcano and earthquake-prone area has its own distinctive characteristics.</p> <p>Intellect - Encourage critical thinking by exploring the science behind volcanoes and earthquakes. Discuss how scientific advancements help predict and mitigate the effects of these disasters.</p> <p>Treat Others with Respect - Discuss the importance of respecting and supporting affected communities. Highlight the role of international aid and cooperation in disaster response.</p> <p>Salvation - Explore stories of survival and rescue during natural disasters. Discuss the concept of salvation, both in a literal sense (rescuing people) and in a spiritual or metaphorical sense (hope and renewal).</p>



Geography Medium Term Plan

	<p>Secondary effects</p> <ul style="list-style-type: none"> The cost of rebuilding may be high. Trade will decrease, especially if the <i>infrastructure</i> (roads, airports etc) have been damaged. Spread of diseases may rise. If dead bodies are left in the open for a long period of time they can cause a risk of infectious diseases, such as tuberculosis and hepatitis B. Poor sanitation may occur if water pipes were broken during the earthquake. <p>Pompeii Facts – Pompeii, preserved ancient Roman city in Campania, Italy, 14 miles (23 km) southeast of Naples, at the southeastern base of Mount Vesuvius. Around noon on August 24, 79 CE, a huge eruption from Mount Vesuvius showered volcanic debris over the city of Pompeii, followed the next day by clouds of blisteringly hot gases. Buildings were destroyed, the population was crushed or asphyxiated, and the city was buried beneath a blanket of ash and pumice. For many centuries Pompeii slept beneath its pall of ash, which perfectly preserved the remains. When these were finally unearthed, in the 1700s, the world was astonished at the discovery of a sophisticated Greco-Roman city frozen in time. Grand public buildings included an impressive forum and an amphitheatre; lavish villas and all kinds of houses, dating back to the 4th century BCE, were also uncovered. Inside were some preserved remains of people sheltering from the eruption; others lay buried as they fled; bakeries were found with loaves still in the ovens. The buildings and their contents revealed day-to-day life in the ancient world—and stirred 18th-century interest in all things classical.</p> <p>Mount Etna (Sicily) Facts - While Mount Etna rarely stays calm for long periods of time, 2021 has been a particularly busy year for the active volcano. It began spewing out a mixture of lava, gas and ash in February 2021 and just 7 months later, in September 2021, Etna had erupted 50 times in 2021! This high level of activity hasn't come as a surprise to scientists who monitor the volcano's activity closely. They started to notice that the volcano was brewing something big in late 2020. They claimed that Etna began burping clouds of ash and gas - their first warning that Etna eruptions were on the way in 2021.</p>	
--	---	--

Key concept	Learning objective	Key components	Main input	Activity	Adaptive strategies
Human and physical geography	<p>What is a volcano and how is it formed?</p> <p>What is an earthquake?</p>	<p>- Find Volcano in the vocab section of knowledge organisers.</p> <p>-What did you observe when you watched the video.</p>	<p>On the children's arrival into class – have a video of a volcano erupting.</p> <p>On each child's desk have a posit note ready for them to describe what describe what they can see. – children to stick the postit note on the whiteboard next to the word Volcano. (Take a picture and stick in books).</p>	<p>Activity 1 (Group activity or individual)</p> <p>Children to create a labelled diagram of a volcano, ensuring they include parts</p>	<p>Have the key words needed as a visual aid for the children.</p> <p>Have an example of a volcano with the first</p>



Geography Medium Term Plan

		<p>-Volcanos can be active, dormant and extinct.</p>	<p>Prior Knowledge!</p> <ul style="list-style-type: none"> • What is a volcano? • Has anyone seen one in a book, film, or in real life? • Can anyone name any famous volcanoes? • What do you think happens when a volcano erupts? <p>Children to look at knowledge organiser – point to the word Volcano – read the definition to the children. Definition of a volcano - An opening in the Earth's crust that allows molten rock, ash, and gases to escape.</p> <p>its important for the children to understand the structure of earth. Where molten is and crust etc. Relate this to volcanos Watch the video - Layers of the Earth video for Kids Inside Our Earth Structure and Components</p> <p>Explain to the children that we are going to be delving into learning all about Volcanos. Watch video - Explore volcanoes - BBC Bitesize</p> <p>HOW VOLCANOS ARE FORMED A volcano is formed when hot molten rock escapes from an opening in the <i>Earth's crust</i>. This opening is called a <i>vent</i>.When molten rock is underneath or within the Earth's crust, it is known as magma. When it erupts above the surface, it is known as lava. After a volcanic eruption, lava cools down and <i>solidifies</i>. This becomes hard <i>igneous rock</i>. As this happens over and over again, the rock builds up in layers to create the cone shape of a volcano.</p>	<p>such as the vent, crater, magma chamber, and lava.</p> <p>Activity 2 After the group activity, ask students to write a short paragraph explaining how volcanoes are formed, using the key vocabulary.</p>	<p>letter of each key word labelled in the correct place.</p> <p>Activity 2 – missing word activity explaining how volcanos are formed.</p>
--	--	--	---	--	---



Geography Medium Term Plan

<p>Human and physical geography</p>	<p>What are the different types of volcanos?</p>	<p>- Volcanos can be active, dormant and extinct. -Composite volcanos are the most common type of volcano. -I can use a variety of resources to find information on the different types of volcanos.</p>	<p>Explain to the children that we have different types of volcanos. Do any children know any?</p> <p>Ask children to look at knowledge organisers to aid in questioning. Active, dormant and extinct. We are going to delve into the different types of volcanos -</p> <p>active volcano - A volcano with a recent history of eruptions that is likely to erupt again. Dormant Volcano - A dormant volcano is one that has not erupted for a long time; however, it may still erupt in the future. Extinct volcano - A volcano that is not expected to erupt in the future</p> <p>Mount Etna is a composite volcano.</p> <ul style="list-style-type: none"> Composite volcanoes are the most common type of volcano. They can have violent eruptions and can grow bigger as layers of thick lava and ash harden on top of each other. Mount Etna in Sicily, Italy, is an example of a composite volcano. 	<p>Working In 2/3's children are to create a volcano following their instructions.</p> <p>How to Make a Papier Mâché Volcano: Easy Experiment Tutorial</p> <p>How to create the base.</p> <ol style="list-style-type: none"> 1.Create a base. 2.Get a small bottle (for the crater). 3. Glue the bottle to the centre of the base. 4. Put the base into a tray. <p>To build the Volcano.</p> <ol style="list-style-type: none"> 1.Make the paste mixture. 2. Make strips of newspaper 3. Make the base layer of paper over the crater. Dry and repeat. 	<p>Pictures of the process ready with simple instructions.</p> <p>Mixed ability groups.</p>



Geography Medium Term Plan

			<ul style="list-style-type: none"> • Shield volcanoes do not have such violent eruptions. These volcanoes tend to have gentle slopes and their runnier lava spreads and hardens over a wider area. Mauna Loa in Hawaii is an example of a shield volcano <p>Some children might even know what a super volcano is. super volcano - A massive volcano that has huge explosive force.</p> <p>Explain to the children that we are going to create our own composite volcanoes. before we do this, we need to create a plan in our books and write a set of instructions and list the ingredients needed to make it. reiterate that shield volcanoes erupting would be a less exciting eruption. Why is this?</p>	<p>This is the end of the lesson. Volcano must dry completely to then paint. TA to take children out by the next lesson to paint Volcanos brown/black.</p>	
Human and physical geography	What are the effects of volcanic eruptions and earthquakes?	<p>-There can be positive and negative effects of volcanic eruptions.</p> <p>-Record the positive and negative effects on a whiteboard whilst watching the video.</p> <p>-There can be primary and secondary effects of a volcano erupting.</p>	<p>Today we are going to explore the positive and negative effects of volcanic eruptions and earthquakes.</p> <p>Go through the PP. Watch earthquake video below. content.twinkl.co.uk/resource/52/70/t-g-1725294363-earthquakes-ks2-geography-concept-video_ver_1.mp4? token =exp=1736165687~acl=%2Fresource%2F52%2F70%2Ft-g-1725294363-earthquakes-ks2-geography-concept-video_ver_1.mp4%2A~hmac=a1757c1c76556c999fed274198d29349fd106da644befdbdba85e46bcb249bb</p> <p>The shaking of the ground caused by an earthquake can cause a variety of effects. These can be classed as primary or secondary effects. Primary effects are caused by the earthquake itself, whereas the secondary effects are caused by the primary effects.</p> <p>Primary effects</p> <ul style="list-style-type: none"> • Buildings may collapse due to the shaking of the ground. • People may die if they are inside a building when it collapses. 	<p>Activity 1 Children to list the positive and negative effects of both volcanic eruptions and earthquakes. Worksheet provided with pictures to aid ideas.</p> <p>Activity 2. Finishing off and exploding our volcanos.</p> <p>Trigger an explosion instruction. 1.Prepare the chemical reaction. Baking soda and vinegar or diet coke and mentos.</p>	<p>Starting input – have pictures and definitions of the different types of volcanos what we looked into from last lesson. Let SEN group look at before the lesson starts!</p> <p>Print and cut out sentences with the effects of volcanic eruptions for children to organise in positives and negatives themselves. They can then stick into books.</p>



Geography Medium Term Plan

- Roads may be blocked; gas and water pipes could be broken, and electricity could be cut off.



Image caption,

The 2011 Tōhoku earthquake and tsunami in Japan caused widespread damage to the country, including the Fukushima Daiichi Nuclear Power Plant in Ōkuma.

Secondary effects

- The cost of rebuilding may be high.
- Trade will decrease, especially if the *infrastructure* (roads, airports etc) has been damaged.
- Spread of diseases may rise. If dead bodies are left in the open for a long period of time they can cause a risk of infectious diseases, such as tuberculosis and hepatitis B.
- Poor sanitation may occur if water pipes were broken during the earthquake.

The effects of volcanoes can be both positive and negative.

Watch volcano video below.

content.twinkl.co.uk/resource/49/36/t-g-1711022480-effects-of-volcanoes-geography-concept-video-ver-1.mp4?token=exp=1736166015~acl=%2Fresource%2F49%2F36%2Ft-g-1711022480-effects-of-volcanoes-geography-concept-video-ver-1.mp4%2A~hmac=e0e95c226fc5e3ec5f3faf8d4285e17780433fadc9e608a6961b7d0b82855aee

2. baking soda into crater followed by 1 cup of vinegar. Or diet coke and drop in up to 3 mentos.
3. Watch the eruption.

TA's to take pictures of the eruptions.



Geography Medium Term Plan

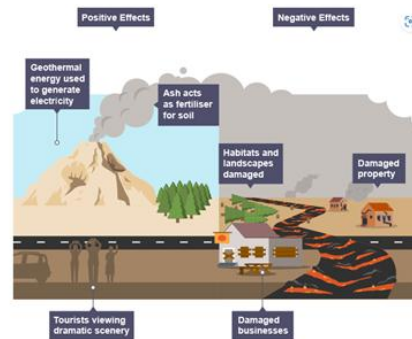
[Positive and negative effects of volcanoes - Volcanoes and volcanic eruptions - Eduqas - GCSE Geography Revision - Eduqas - BBC Bitesize](#)

Positive effects

- *Geothermal* energy is where heat from within the Earth is used to generate electricity. Geothermal energy can be generated in areas where *magma* lies close to the surface. This is good for increasing renewable energy use.
- **Ash** ejected by the volcano acts as a good fertiliser for soils.
- Volcanoes attract many tourists, who enjoy the dramatic scenery that they produce.
- Rising magma brings valuable minerals to the surface, creating mining opportunities.

Negative effects

- Volcanoes are dangerous. They can kill people and damage property.
- Economic activity can suffer as it is hard for businesses to operate after an eruption.
- Habitats and landscapes are damaged by *lava* flows.



In groups – TA led.

Following on from last lesson children are to continue their composite volcano making. Recount last lesson with the children and see if they can remember the different types of volcanos. Ask children to write what they remember (types of volcanos) on a whiteboard. Any




Geography Medium Term Plan

			<p>children to explain any similarities or differences between them.</p> <p>Children are to finish off and create the explosion.</p>		
Locational knowledge.	How have famous eruptions effected Italy?	<p>-The most famous volcano in Italy is Mount Vesuvius.</p> <p>- Use primary and secondary resources to research the key facts.</p> <p>-Make a list of reasons people want to go to Pompeii.</p>	<p>Have a map of Europe on the board – can children identify where England/UK is? What about Italy? Tell the children that we are going to be looking at a famous historical event that happened in Italy, all because of a violent volcano. Mount Vesuvius.</p> <p>Show the children Pics.</p> <p>Look at the PP all about the effects of the eruption of Mount Vesuvius.</p> <p>Watch timeline video of Pompeii disaster. Bing Videos</p> <p>Explain to the children that both Mount Vesuvius and historic site of Pompeii bring in a lot of money for the surrounding area, tour guides, hotels, restaurants, shops etc.</p> <p>On tables – provide children with several resource materials for the children to use. Recounts, biographies, fact files etc. Provide pictures of Pompeii now and key information.</p> <p>Websites of day trips people can go on? Walking up to Mount Vesuvius, walking around Pompeii.</p>	<p>Create a leaflet advertising a visit to Pompeii and Mount Vesuvius.</p> <p>Use a folded A4 sheet of plain paper using subheadings, paragraphs, pictures, index, front cover.</p>	<p>Have a word bank of subheadings and scaffolded template to aid SEN children.</p>
Locational knowledge.	Why is Mount Etna dangerous today?	<p>-What do we already know about Mount Etna?</p> <p>-Mount Etna is the largest and most active volcano in Europe.</p> <p>-Use primary and secondary resources to find key information of Mount Etna.</p>	<p>Last lesson we looked at Mount Vesuvius, today we are going to be looking at another violent volcano in Italy, in Sicily. Called Mount Etna.</p> <p>Using a map – children to identify where Vesuvius is, and Etna is.</p>	<p>Children to create a fact file listing all the reasons discussed as a class as to why Mount Etna is the most dangerous volcano in Europe.</p>	<p>Provide a worksheet template of the fact file.</p>



Geography Medium Term Plan

			 <p>Show the children this video - Bing Videos</p> <p>Look at PP – detailing important facts and information about the dangers of Mount Etna.</p> <p>Mount Etna is the most active volcano in Europe! It is sometimes described as being in a constant state of activity, due to the high frequency of its eruptions. It's not hard to see that Mount Etna is a very tall volcano. But did you know that it's one of the highest active volcanoes in all of Europe?</p>		
<p>Human and physical geography Locational knowledge.</p>	<p>Do volcanos still effect life today?</p>		<p>Combining everything we have learnt over the past 6 weeks; children are to create a double page (In books) Poster detailing everything they know about Volcanos and Earthquakes. Recap with the children in chronological order what we know and have learnt.</p> <p>Ask the children to look at our knowledge organiser – discuss with talk partners what we know. Share knowledge and ideas as a class.</p> <p>What is a volcano and how is it formed? What are the different types of volcanos?</p>	<p>Children to create a double page poster all about Volcanos. Using</p> <ul style="list-style-type: none"> -Subheadings -paragraphs -written using sentences with Capital letters, full stops, conjunctions and prepositions correctly. 	<p>Pre learning – TA – to take SEN children outside and discuss what we have learnt over the past 6 weeks. Keep referring on our knowledge organisers.</p> <p>Provide pictures for the children to write about.</p>



Geography Medium Term Plan

			What are the effects of volcanic eruptions and earthquakes? How have famous eruptions effected Italy? POMPAII Why is Mount Etna dangerous today?		
--	--	--	--	--	--