

Climate Action Plan



St Leonards C of E Primary



CLIMATE ACTION PLAN



At St Leonards C of E Primary, we believe that small actions can lead to big changes, and we're excited to take steps toward a greener, more sustainable future. Our Climate Action Plan is all about creating a positive impact on the environment while inspiring our students, staff, and families to work together for a cleaner, healthier world.

From reducing waste to saving energy, we are committed to making eco-friendly choices that will benefit not only our school but the community around us. By embracing these efforts, we hope to encourage everyone at St Leonards C of E Primary to become climate champions and help build a brighter, more sustainable tomorrow.

SUMMARY

Not started: 19 items
In progress: 5 items
Completed: 1 item





Section

DECARBONISATION

RUN A SWITCH OFF CAMPAIGN

A switch-off campaign raises awareness about energy consumption and encourages simple behavioural changes to reduce waste. Schools can run competitions, put up reminder posters, and conduct audits to track energy savings. Engaging pupils through classroom discussions and real-time energy monitoring can make energy efficiency a long-term habit.

NOT STARTED

UPGRADE ELECTRICAL APPLIANCES TO ENERGY-EFFICIENT ALTERNATIVES

Schools can significantly reduce electricity consumption by upgrading to energy-efficient appliances, including LED lighting, low-energy projectors, and efficient kitchen equipment. Energy Star-rated devices and appliances use less power, lowering operational costs and environmental impact. Schools should prioritise replacing older, inefficient devices first to maximise savings.

NOT STARTED





Section

DECARBONISATION

DELIVER SOME LESSONS OUTSIDE

Outdoor lessons provide pupils with fresh air and a change of scenery while reducing reliance on indoor lighting and heating. Whether it's reading in a shaded area, conducting science experiments outside, or using school gardens for hands-on learning, outdoor education fosters engagement and sustainability awareness.

Started: 11th Sep 2025

IN PROGRESS

INSTALL LED LIGHTING

LED lighting is a cost-effective and energy-efficient alternative to traditional incandescent and fluorescent bulbs. By switching to LED lighting, schools can significantly reduce electricity consumption and maintenance costs while lowering their carbon footprint. LED bulbs also generate less heat, improving classroom comfort and reducing the need for air conditioning.

Started: 11th Sep 2025

IN PROGRESS





Section

DECARBONISATION

INSTALL MOTION SENSORS TO LIGHTS

Motion sensors automatically turn lights on and off depending on occupancy. By installing these in classrooms, hallways, and restrooms, schools can significantly cut down on wasted electricity. This ensures that lights are only used when needed, reducing overall energy consumption.

Started: 11th Sep 2025

IN PROGRESS



Section

ADAPTATION & RESILIENCE

CREATE A SCHOOL COMMUNITY GARDEN FOR FOOD RESILIENCE

Establishing a community garden allows schools to grow their own fruits and vegetables, reducing reliance on external food sources. This initiative provides hands-on sustainability education, promotes healthy eating, and fosters a sense of community among pupils and staff.

NOT STARTED

INSTALL WATER BUTTS

Water butts allow schools to collect and store rainwater, reducing dependence on mains water for irrigation, cleaning, and other non-drinking purposes. This initiative helps conserve water, cut utility costs, and educate pupils on sustainable water management practices. Schools implementing water butts can use them to water gardens, supply outdoor play areas, and even contribute to science lessons on water conservation.

NOT STARTED



ADAPTATION & RESILIENCE

SET UP A SCHOOL RESILIENCE COMMITTEE

Establishing a resilience committee ensures ongoing adaptation to environmental challenges. This team, composed of pupils, staff, and community members, can assess risks, implement sustainability policies, and coordinate resilience projects. Regular meetings will help track progress and adjust strategies as needed.

NOT STARTED

SOURCE CLEANING PRODUCTS WITH ECO-CERTIFICATIONS.

Traditional cleaning products contain harmful chemicals that can pollute water and air. Schools can transition to eco-friendly alternatives certified by environmental agencies, reducing exposure to toxins and supporting sustainability efforts.

NOT STARTED



Section

ADAPTATION & RESILIENCE

PLANT TREES TO CREATE SHADED AREAS

Planting trees strategically around the school campus provides natural cooling, reducing the need for artificial cooling systems during hot months. Trees also improve air quality by filtering pollutants, enhance biodiversity by providing habitats for birds and insects, and create inviting outdoor learning spaces. As they grow, trees contribute to carbon sequestration, offsetting a portion of the school's emissions while simultaneously improving pupil wellbeing.

Started: 11th Sep 2025

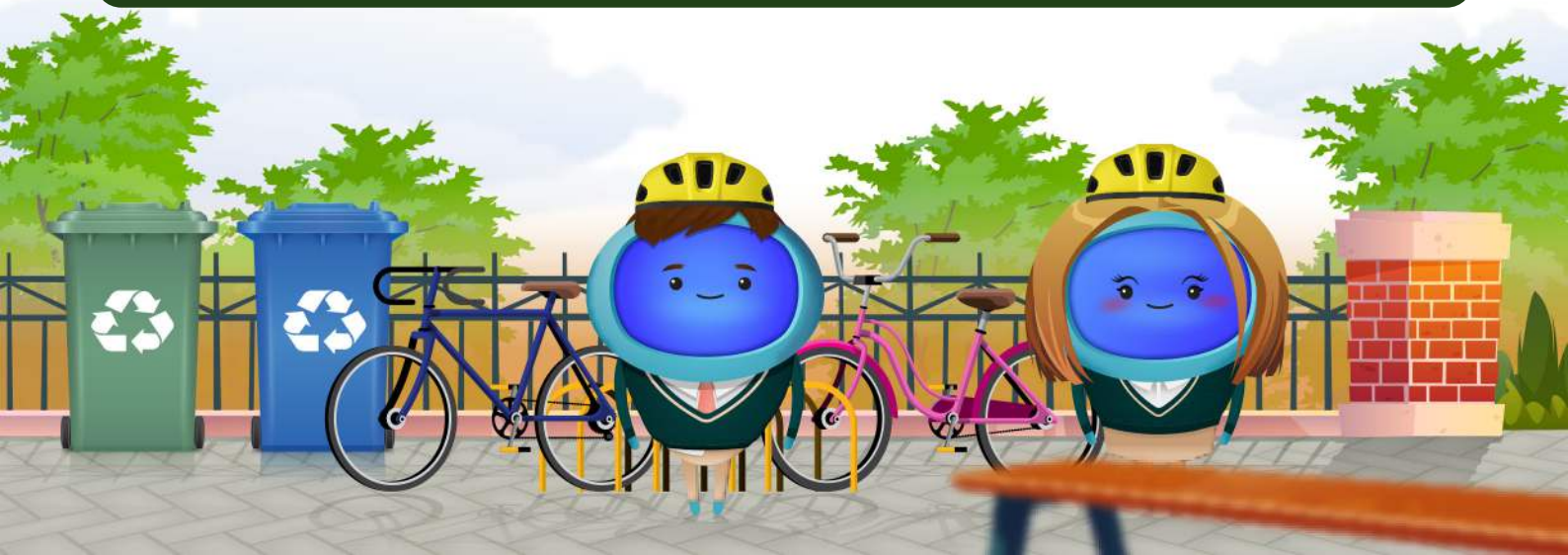
IN PROGRESS

USE REFILLABLE WHITEBOARD MARKERS AND STATIONERY

Many standard whiteboard markers and pens are single-use, contributing to plastic waste. Schools can transition to refillable options, reducing landfill waste and lowering procurement costs in the long run. Refillable stationery is also often made from sustainable materials, further reducing environmental impact.

Started: 11th Sep 2025

IN PROGRESS





Section

BIODIVERSITY

BUILD A SCHOOL POND FOR WILDLIFE

School ponds provide essential habitats for amphibians, insects, and birds, improving local biodiversity. They also offer a hands-on educational resource for pupils to study aquatic ecosystems, life cycles, and conservation. Proper maintenance ensures the pond remains a thriving habitat.

NOT STARTED

BUILD AN INSECT HOTEL

Log piles and disused wood pallets can be used to create a natural habitat for insects, amphibians, and fungi, enhancing biodiversity and promoting decomposition processes. They can be strategically placed in school gardens to serve as learning tools for ecology studies.

NOT STARTED





Section

BIODIVERSITY

CARRY OUT A NATURE SURVEY

Schools can conduct nature surveys to document the species of plants, insects, and animals found on school grounds. This information can help identify areas for biodiversity improvement, such as adding nesting boxes, planting native species, or reducing pesticide use. Engaging pupils in biodiversity monitoring promotes conservation awareness and scientific curiosity.

NOT STARTED

CREATE A HERB GARDEN FOR THE KITCHEN TO USE

Schools can create herb gardens to supply fresh ingredients for the kitchen, reducing the need for store-bought herbs and promoting sustainable food practices. Pupils can be involved in growing and maintaining the garden, learning valuable gardening and nutrition skills. Herb gardens also attract pollinators, supporting local biodiversity.

NOT STARTED





Section

BIODIVERSITY

PLANT A HEDGE TO CREATE A NATURAL WINDBREAK

Hedgerows provide shelter for wildlife, improve air quality, and act as a natural windbreak to protect school buildings and playgrounds. They enhance green spaces while reducing noise pollution and improving local air quality.

NOT STARTED

SIGN YOUR SCHOOL UP TO EDUCATION NATURE PARK

Schools can participate in local or national education nature park programs to connect pupils with nature-based learning experiences. These programs provide hands-on engagement with biodiversity, conservation, and sustainability. By participating, pupils gain a deeper appreciation of the environment, and schools can access valuable teaching resources and support for outdoor learning initiatives.

NOT STARTED





Section

BIODIVERSITY

WORK WITH THE PUPILS TO GET THEIR VIEWS ON HOW THE SCHOOL SITE SHOULD LOOK

Schools can involve pupils in decision-making about their learning environment, ensuring that sustainability considerations are incorporated. Whether through workshops, surveys, or school councils, pupil input can lead to more effective green space planning, improved outdoor learning areas, and projects that align with their needs and interests. Involving pupils also increases their sense of ownership and responsibility for the school environment.

NOT STARTED





Section

BIODIVERSITY

PARTICIPATE IN THE RSPB BIRDWATCH

Schools can engage pupils in the Royal Society for the Protection of Birds (RSPB) Birdwatch, an annual citizen science event where participants record and report bird sightings. This initiative helps develop observation skills, raises awareness of biodiversity, and contributes valuable data for conservation efforts. Schools can integrate this activity into science and geography lessons to reinforce learning.

Started: 11th Sep 2025

Completed: 11th Sep 2025

COMPLETED





Section

CLIMATE EDUCATION & GREEN SKILLS

CREATE A 'SUSTAINABILITY IN CAREERS' DAY

By exposing pupils to careers in sustainability, schools can inspire future professionals who prioritise environmental responsibility. This event can feature guest speakers, panel discussions, and interactive workshops showcasing opportunities in renewable energy, environmental policy, and sustainable business practices.

NOT STARTED

CREATE A SCHOOL SUSTAINABILITY PLEDGE PROGRAM

Schools can implement a pledge program where pupils and staff commit to eco-friendly actions such as reducing waste, conserving energy, and using sustainable transport. Regular updates and rewards keep engagement high.

NOT STARTED





Section

CLIMATE EDUCATION & GREEN SKILLS

DEVELOP AN OUTDOOR LEARNING PROGRAM FOCUSED ON NATURE

Outdoor learning programs provide pupils with hands-on experiences in nature, teaching them about local ecosystems, biodiversity, and conservation. Schools can create learning gardens, conduct nature walks, or collaborate with conservation groups to enhance pupil engagement with the environment.

NOT STARTED



Section

CLIMATE EDUCATION & GREEN SKILLS

INTRODUCE A SUSTAINABILITY LESSON IN EVERY SUBJECT

Embedding sustainability into the curriculum across all subjects helps pupils develop an awareness of environmental issues. Science classes can discuss climate change, geography can cover ecosystems, and mathematics can explore energy consumption statistics. By integrating sustainability into daily learning, pupils can develop a mindset of environmental responsibility and apply these principles beyond the classroom.

NOT STARTED

ORGANISE A WALK TO SCHOOL WEEK

Encouraging pupils and staff to walk, bike, or use public transport instead of driving can reduce emissions and improve local air quality. A Walk to School Week helps raise awareness about the environmental and health benefits of active travel.

NOT STARTED



Section

CLIMATE EDUCATION & GREEN SKILLS

PROVIDE STAFF CPD ON EMBEDDING SUSTAINABILITY IN THE CURRICULUM

Schools can offer CPD sessions focused on embedding sustainability across subjects, ensuring that educators have the knowledge and resources to integrate environmental topics effectively. UCL's free Teaching for Sustainable Futures course is available for Geography and History teachers, but training should also support other subjects in incorporating sustainability themes. Ensuring teachers have dedicated time for curriculum development helps make sustainability a lasting part of the school's educational framework.

NOT STARTED

